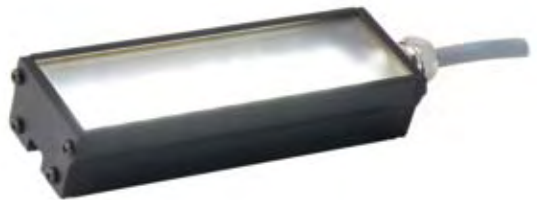


EL116

Expandable, Compact High Brightness Bar Light



- 4i)** High intensity light in a small package - only 32.2 mm (1.27") wide
- 4i)** Expandable in 50mm (2") increments up to 521.2mm (20")

Ordering Information

Standard Product Variation:
Shipped Within Two Weeks

EL116 **XX** - **XXX** **XX** **X** **X** **XXX**

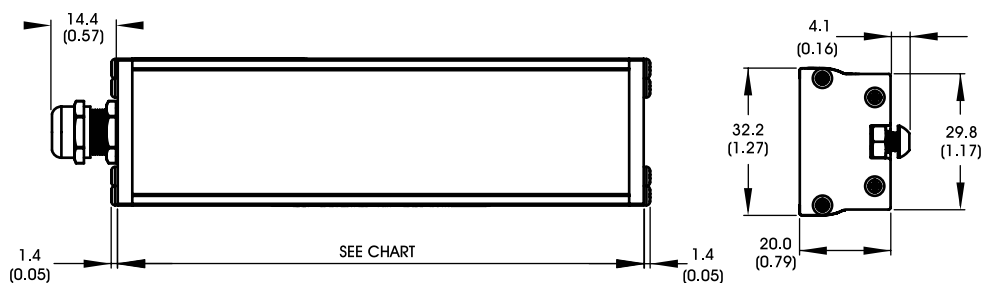
Lighted Length Spectral wavelength Optional power compatibility Wash Down Option Polarizer Option Alternative Connector

2" increments up to 20" (white) WHI IC
IS*
C2*
C3
C5
24 W p° M12*

IC = ICS (requires 24v power supply)
IS = ISU (requires 24v power supply)
C2 = Ai Connector
C5 = Pulsar 320 Connector
● Not available with all lengths
★ Available with IC, IS, and 24v options only
○ Not available in combination with the Wash Down Option

Built-to-order lights are non-returnable.

Dimensional Information



Cable Length: 1.5 Meter (59")

DIMENSIONS ARE IN MILLIMETERS (INCHES)

EL116 Unsealed	
PART NUMBER	LENGTH IN MM
EL11602	64.0 (2.52)
AL116*	114.8 (4.52)
EL11606	165.6 (6.52)
EL11608	216.4 (8.52)
EL11610	267.2 (10.52)
EL11612	318.0 (12.52)
EL11614	368.8 (14.52)
EL11616	419.6 (16.52)
EL11618	470.4 (18.52)
EL11620	521.2 (20.52)

*see AL116 Spec Sheet

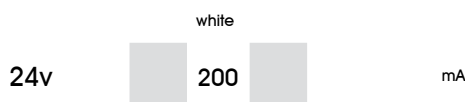
EL116 with Washdown	
PART NUMBER	LENGTH IN MM
EL11602	66.6 (2.62)
AL116*	117.4 (4.62)
EL11606	168.2 (6.62)
EL11608	219.0 (8.62)
EL11610	269.8 (10.62)
EL11612	320.6 (12.62)
EL11614	371.4 (14.62)
EL11616	422.2 (16.62)
EL11618	473.0 (18.62)
EL11620	523.8 (20.62)

*see AL116 Spec Sheet

[Click for Installation Models & Drawings](#)

Current Requirements

Maximum draw per each 50mm (2") segment



Standard Product Information

Product Lifetime: 50,000 hours

Operating Temperature: 0-60° C