

PULSAR 320

High Output Strobe Controller

- Aii** Compact, high power pulse (strobe only) current source
- Aii** Controlled locally w/PC and USB2, or remotely w/built-in Ethernet interface.
- Aii** 50A per output; 100A total output



Ordering Information

Standard Product:
Shipped Next Day

S320

Input Power:

12-36 VDC (24V nominal @ 4 Amps Continuous) (brown-out protected)

Output:

50A per output, 100A total output
100VDC per output
(48VDC available by request)

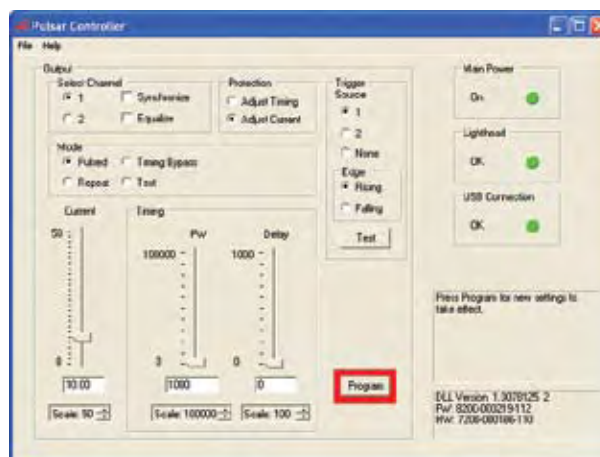
Max Repetition Rate:*
400 Hz

* Light head dependent

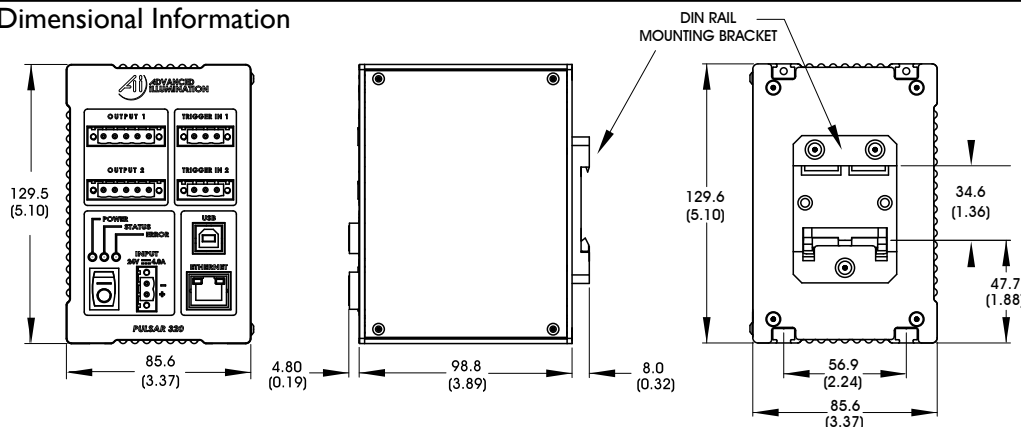
** Current and timing dependent

Signatech Controller Software

Signatech software enables the user to program all strobe controller current and timing parameters. Currents are programmable for each of 2 outputs, and expressed in amps from 0-50. Timing parameters include pulse width, and post event delay time. All timing parameters are programmed in steps of 1 microsecond, up to a maximum of 100,000.



Dimensional Information



[Click for Installation Models & Drawings](#)

Included in the package:

- Installation CD
- 3-Pin, Trigger input connectors (2)
- 2-Pin, Power input connectors
- USB Cable

Additional Information



Lights for use with the Pulsar 320 need to be ordered with C5 connector

Standard Product Information

Operating Temperature: 0-55° C



Meets CE standards