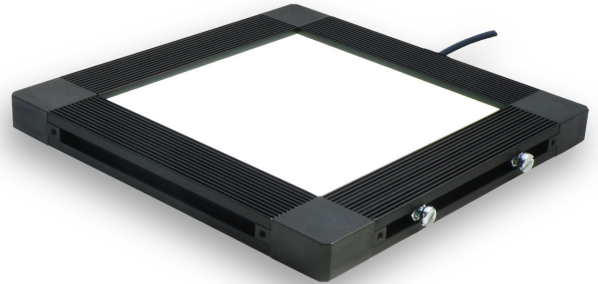


Product Highlights

- The CX Series of edge-lit collimated backlights provides a uniform source of illumination, packed within a thin and thermally efficient housing. Its built-in collimation film makes it ideal for backlight applications where you need a high degree of edge clarity when imaging object silhouettes. This focus on edge clarity differentiates the CX series from Ai's BX Edge-lit Backlights, which instead of utilizing collimation, offers an optional polarization film.
- Product to be discontinued. Refer to change notice for details.



General Specifications

General Specifications

Model	Emitting Length (in)	Emitting Width (in)	-	Peak Wavelength	Connector/Control	Light Conditioning Option	-	Alternative Connector
XX	XX	XX	-	XXX	XX	X	-	XXX
BX (non-collimated)	01" increments from 01" to 24"	01" increments from 01" to 24"		455 (royal-blue)	C1	P (Polarization) ^{2,3}		M12 ¹
CX (collimated) ^{2,4}				530 (green)	C5			M8 ¹
				625 (red-orange)	IC			
				850 (IR)	I3			
				WHI (white)	I3S			
					I4			

Example Part Numbers:

BX0312-455C1

BX0608-625IC-M12

CX1212-WHI I3-M12

¹ Available with IC, I3, I3S, and I4² Maximum size of 16" x 16"³ 455 (royal-blue) will reduce the life of the polarizer if selected⁴ Equipped with a collimation film

Part Number Key

Model	Emitting Length (in)	Emitting Width (in)	-	Peak Wavelength	Connector/Control	-	Alternative Connector
CX	XX	YY		XXX	XX		XXX
CX	01" increments from 01" to 16"	01" increments from 01" to 16"		455 (blue)	C1		M12 ¹
				530 (green)	C5		M8 ¹
				625 (red)	IC		
				850 (IR)	I3		
				WHI (white)	I3S		
					I4		

Example Part Numbers:

CX0312-455C1

CX0608-625IC-M12

¹ Available with IC, I3, I3S, and I4

General Specifications

Category	Specification			Detail	
Optical	Available Wavelengths			White, 455 nm, 530 nm, 625 nm, 850 nm	
	Available Lensing			No Lenses	
	Available Light Conditioning			None	
Electrical	Power Consumption Info			Refer to Datasheet for Details	
	Cable Info			80" -0/+6" Long (2 m -0/+150 mm), 105 °C Rated, Foil Shield w/ Drain	
Mechanical	Sizing Info	Standard	Length	3.79" (96.2 mm) to 18.79" (477.3 mm)	Refer to Datasheet for Details
			Width	3.54" (89.9 mm) to 18.54" (470.9 mm)	
			Height	.75" (19.1 mm)	
	Weight Info (Standard)			~ 3.22 lbs (~1460 g) per 8x8" Unit	
	Mounting Info			M6 Mounting Nut Channel, Refer to Datasheet for Details	
Material Info			Anodized Aluminum Housing, Acrylic Window, Polycarbonate Strain Relief & Corners, PVC Cable Jacket, Steel Black Oxide and Zinc Plated Steel Fasteners		
Thermal	Operating Case Temperatures			25 °C to 60 °C	
	Operating Ambient Temperatures			0 °C to 35 °C	
Certification	Compliance			CE, RoHS, IEC 62471	
	IP Rating			IP50	
	Lumen Maintenance - White Only			L70 (50,000 Hours)	

Change Notice

PCN No: 173

Date Issued: July 22, 2024

Notice Type: Product Discontinuation

Product Type: BX, CX and FX

Change Notification Summary

Advanced Illumination (Ai) will be discontinuing the sale of BXXXYY, CXXXYY and FXXXYY Backlights on October 31,

2024, and will be recommending the new BX2 Series to replace BX and CX, and FX2 as a replacement for the FX. The BX2 and FX2 Series provides an improvement in light output, structural rigidity, emitting window uniformity, and efficiency, at no additional cost over the original BX, CX and FX designs. In addition the measurement system will be changing from imperial to metric, so a BX0404 will be replaced with BX2-100100.

Please contact your Ai Sales Representative if you have any questions.

PCN 173 BX, CX AND FX

Warranty Information

Every Advanced illumination, Inc. (Ai) product is thoroughly inspected and tested before leaving the factory. Products are warranted to be free of defects in workmanship and materials for a period of FIVE YEARS from the original date of purchase. Should a defect develop during this period, customers may return the complete product, freight prepaid, to one of Ai's distributors or to the Ai factory. All product warranty returns require a Return Merchandise Authorization (RMA) number which is obtained from Customer Service. The RMA number must be clearly marked on the outside of the package. Ai will inspect the unit, and if a defect is found will, at our option, repair or replace the product without charge. Ai disclaims liability for any implied warranties, including implied warranties of "merchantability" and "fitness for a specific purpose." For products under warranty that have since been discontinued, Ai will make an effort to replace with equivalent parts; for circumstances that do not allow for equivalent replacement, Ai reserves the right to repair or replace these products with an updated version. Ai cannot be held responsible for the unauthorized or inappropriate use of its products. Any unauthorized repair or modifications will result in a voided warranty.

No Liability for Consequential Damages: In no event shall Ai be liable for any consequential, special, incidental, or indirect damages of any kind arising from the sale or use of the products.

Electromagnetic Compatibility

This product was tested and complies with the regulatory requirements and limits for electromagnetic compatibility (EMC) as stated in the product specifications. These requirements and limits are designed to provide reasonable protection against harmful interference only when the product is operated in its intended industrial electromagnetic environment. To minimize the potential for electromagnetic interference or unacceptable performance degradation, install and use this product in strict accordance with the instructions in the product documentation.

Customer Service

For information on existing orders, or to make an order adjustment, contact us Monday through Friday 8:00 am to 5:00 pm ET or send an email to orders@advancedillumination.com.

Company Information

Advanced Illumination

440 State Garage Road, Rochester, VT 05767

Phone: 802.767.3830

Fax: 802.767.2636

Email: info@advancedillumination.com

Web: advancedillumination.com

© 2021 Advanced illumination Inc. All rights reserved