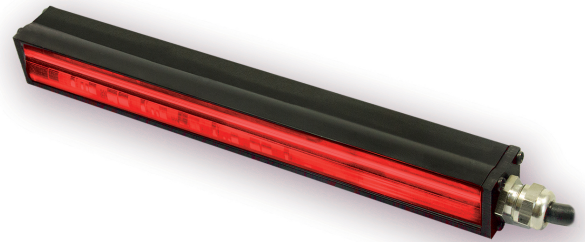


### Product Highlights

- Part of the MicroBrite™ family of high performance, compact machine vision lights.
- This line light series utilizes a fresnel lens for a compact form factor.
- Provides an intensity level of 189kLux (working distance of 75mm)



### General Specifications

	Color	24V Current	All Other Controls
Electrical Specifications	455, WHI	0.10A Per 50mm	0.15A Max Per 50mm
	660, 730	0.06A Per 50mm	0.13A Max Per 50mm
	850, 940	0.10A Per 50mm	0.12A Max Per 50mm
Normal Operating Temperature	0 - 60°C		
Weight	Varies by Size; LL232-150 unit is 86.2g (3.04oz)		
Standard Cable Information	Up to 2 meters (80") long - 105°C rated PVC jacket, foil shield with drain.		
Photobiological Risk Factor	Exempt Applicable Wavelengths: 850, 940		
	Group 1 (Low-Risk) Applicable Wavelengths: 455, 660, 730, WHI		
Compliance	IP Rating		
Lumen Maintenance	L70 = 50,000 Hours		

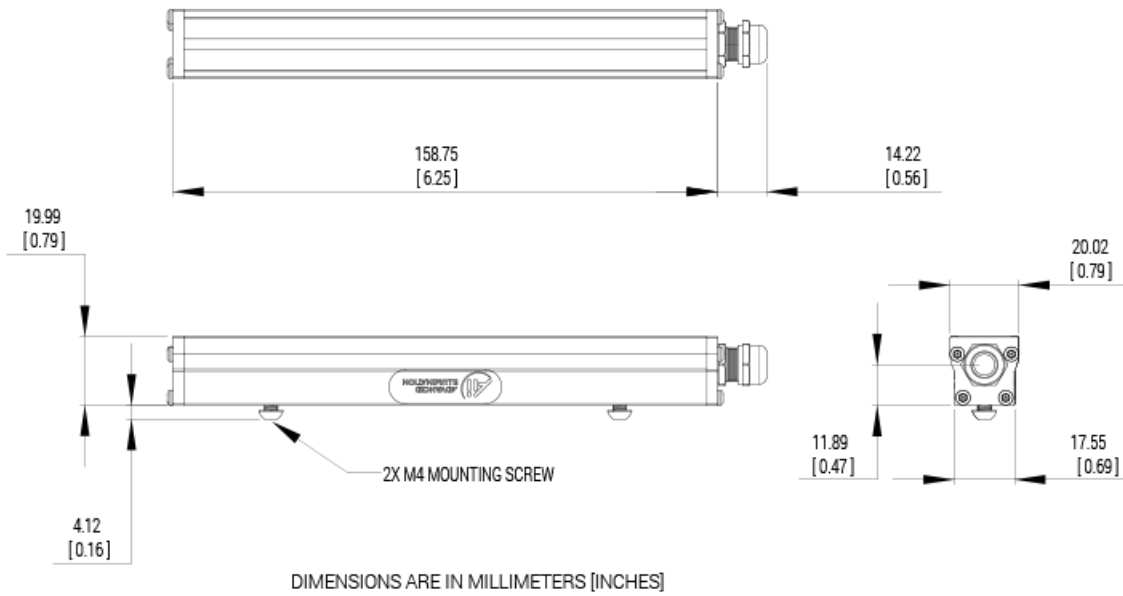
## Part Number Key

Model	—	Lighted Length	Spectral Wavelength	Connector/ Control	—	Alternative Connector
<b>LL232</b>	<b>—</b>	<b>XXX</b>	<b>XXX</b>	<b>XX</b>	<b>—</b>	<b>XXX</b>
LL232		Increments of 50mm; 050 to 750	(royal blue) 455 (red) 660 (infra-red) 730 (infra-red) 850 (infra-red) 940 (white) WHI	C1 C5 IC I3 I3S 24		M12 <sup>1</sup>
Ex: LL232-050WHIC1 LL232-200660IC-M12		<sup>1</sup> Available with IC, I3, I3S, and 24v options only				

**Stock Product:** *shipped next day*  
None

**Build to Order:** *shipped in two weeks*

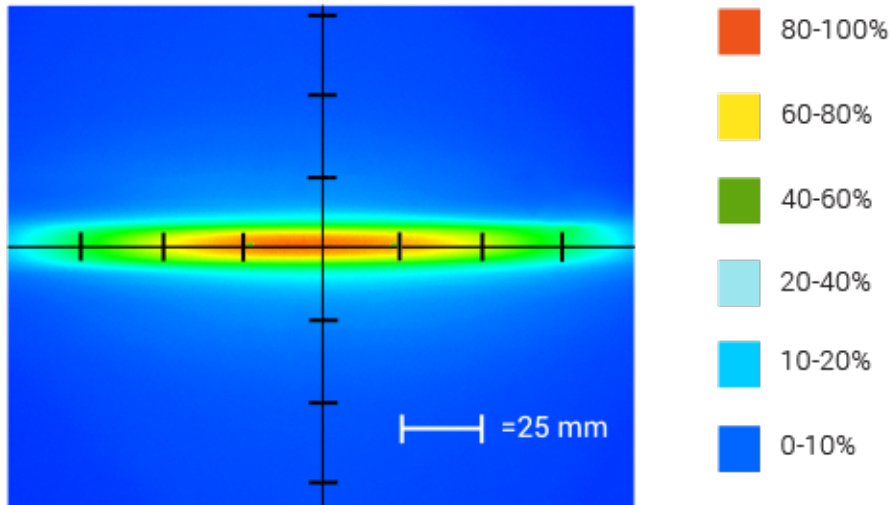
## Mechanical Specs



Part #	Length in mm [inches]
LL232-050	64.0 [2.25]
LL232-100	114.8 [4.25]
LL232-150	165.6 [6.25]
LL232-200	216.4 [8.25]
LL232-250	267.2 [10.25]
LL232-300	318.0 [12.25]
LL232-350	368.8 [14.25]
LL232-400	419.6 [16.25]
LL232-450	470.4 [18.25]
LL232-500	521.2 [20.25]
LL232-550	572.0 [22.25]
LL232-600	622.8 [24.25]
LL232-650	673.6 [26.25]
LL232-700	724.4 [28.25]
LL232-750	775.2 [30.25]

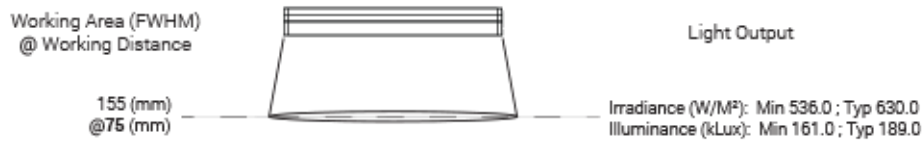
## Optical Specs

### Intensity Distribution



Optical measurement taken using LL232-150WHIIC @ 75mm

### Area of Illuminance & Intensity



## Electrical Specs

### ICS 2 (IC)

Pin (M12)	Function	Wire Color
1	+24 VDC	Brown
2	0-10 VDC Analog Control	White
3	GND	Blue
4	GLO	Black
5	N/A	Gray

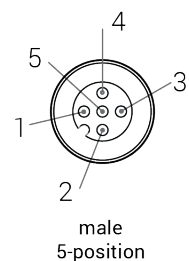
### ICS 3 (I3 and I3S)

Pin (M12)	Function	Wire Color
1	+24 VDC	Brown
2	GND	White
3	GND	Blue
4	PNP/Active High Trigger	Black
5	0-10 VDC Analog Control	Gray

### 24 Volt

Pin (M12)	Function	Wire Color
1	+24 VDC	Brown
2	N/A	White
3	-24 VDC	Blue
4	N/A	Black
5	N/A	Gray

### Optional M12 Pinout



## Control Specs

C1 Connector	C5 Connector	IC	I3	I3S	24
For use with: DCS Series Controllers	For use with: Pulsar 320 Strobe Controller.	Continous in-line controller  Powered with: 24V power supply	Combination strobe/continous in-line controller  Powered with: 24V power supply	Default-OFF strobe/continous in-line controller  Powered with: 24V power supply	Flying/tinned leads  Powered with: 24V power supply

## Warranty Information

Every Advanced illumination, Inc. (Ai) product is thoroughly inspected and tested before leaving the factory. Products are warranted to be free of defects in workmanship and materials for a period of FIVE YEARS from the original date of purchase. Should a defect develop during this period, customers may return the complete product, freight prepaid, to one of Ai's distributors or to the Ai factory. All product warranty returns require a Return Merchandise Authorization (RMA) number which is obtained from Customer Service. The RMA number must be clearly marked on the outside of the package. Ai will inspect the unit, and if a defect is found will, at our option, repair or replace the product without charge. Ai disclaims liability for any implied warranties, including implied warranties of "merchantability" and "fitness for a specific purpose." For products under warranty that have since been discontinued, Ai will make an effort to replace with equivalent parts; for circumstances that do not allow for equivalent replacement, Ai reserves the right to repair or replace these products with an updated version. Ai cannot be held responsible for the unauthorized or inappropriate use of its products. Any unauthorized repair or modifications will result in a voided warranty.

No Liability for Consequential Damages: In no event shall Ai be liable for any consequential, special, incidental, or indirect damages of any kind arising from the sale or use of the products.

## Electromagnetic Compatibility

This product was tested and complies with the regulatory requirements and limits for electromagnetic compatibility (EMC) as stated in the product specifications. These requirements and limits are designed to provide reasonable protection against harmful interference only when the product is operated in its intended industrial electromagnetic environment. To minimize the potential for electromagnetic interference or unacceptable performance degradation, install and use this product in strict accordance with the instructions in the product documentation.

## Customer Service

For information on existing orders, or to make an order adjustment, contact us Monday through Friday 8:00 am to 5:00 pm ET or send an email to [orders@advill.com](mailto:orders@advill.com).

## Company Information

### **Advanced Illumination**

440 State Garage Road, Rochester, VT 05767

Phone: 802.767.3830

Fax: 802.767.3831

Email: [info@advancedillumination.com](mailto:info@advancedillumination.com)

Web: [advancedillumination.com](http://advancedillumination.com)

© 2020 Advanced illumination Inc. All rights reserved