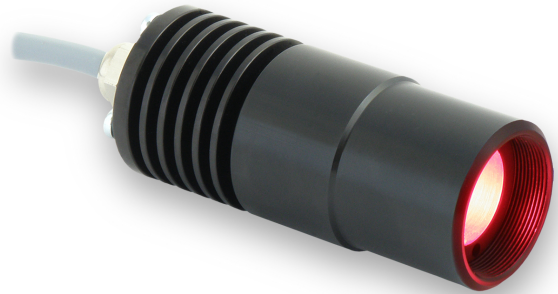


### Product Highlights

- The SL191 is characterized as a Pattern Projecting Spot Light and is designed for applications requiring structured illumination.
- Pattern projection is ideal for locating edges, offsets, and assessing topography.



### General Specifications

	Color	24V Current	All Other Controls
Electrical Specifications	625	1A	0.085A Max
	455, 530, WHI	1A	0.13A Max
Normal Operating Temperature	0 - 60°C		
Weight	113.4g (4.0oz)		
Standard Cable Information	2 m long -0/+150 mm (80" -0/+6") - 105°C rated PVC jacket, foil shield with drain.		
Photobiological Risk Factor	Group 1 (Low-Risk) Applicable Wavelengths: 455, 530, 625, WHI		
Compliance	CE, RoHS, IEC 62471		
IP Rating	IP50		
Lumen Maintenance	L70 = 50,000 Hours		

## Part Number Key

Model	—	Peak Wavelength	Connector/Control	Reticle Option	—	Alternative Connector
SL191	-	XXX	XX	XXX	-	XXX
SL191		455 (blue)	C1	ROL		M8 <sup>1</sup>
		530 (green)	C5	RCH		M12 <sup>1</sup>
		625 (red)	IC	RED		
		WHI (white)	I3	RML		
			24	RGR		
EX:		<sup>1</sup> Available with IC AND I3 options only				
SL191-WHIICRED						
SL191-625C1ROL-M12						

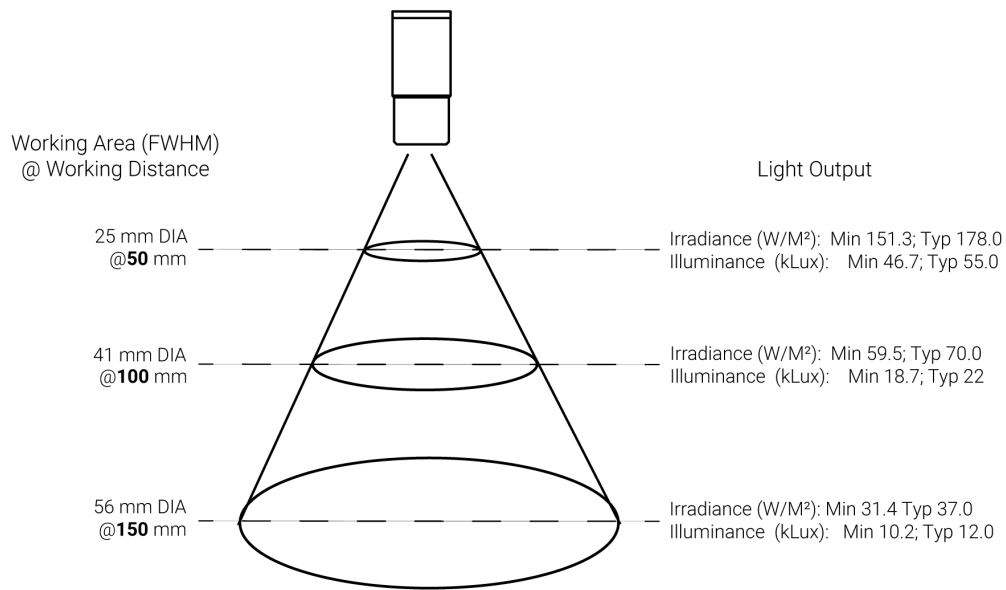
See website product page for in-stock product numbers.

**Shipping:**

Stock Products: within three days

Build-to-Order Products: within one to three weeks

## Optical Specs



Note: Intensity data represents SL191 without reticle.

## Change Notice

PCN No: 148

Date Issued: June 30, 2018

Notice Type: Product Revision Change

Product Type: SL191

## Change Notification Summary

In an effort to improve our products, Advanced illumination (Ai) will update the LEDs used in the SL191 design. This change will result in a brighter light at the same price. Customers may still buy the current revision of this model until September 7th of 2018. After that time, orders for these products will be converted to their respective SL191 Revision A models.

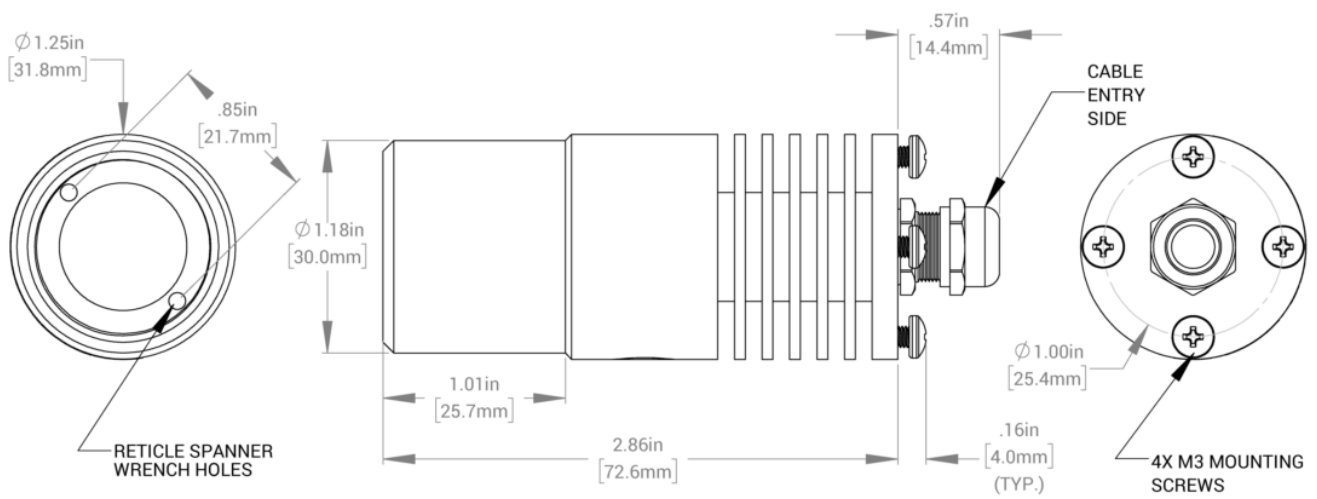
This LED change will result in additional wavelengths being available: 470nm, 505nm, 590nm, 660nm, 730nm, 850nm and 940nm. Additionally the white LED color temperature will be changing from 6500K to 5000K.

Orders for customized (dash numbers) versions of SL191 will be honored until October 5th of 2018. Ai will be actively working with customers for those products to simplify the transition.

Please contact your Ai Sales Representative if you have any questions.

PCN 148 SL191

## Mechanical Specs



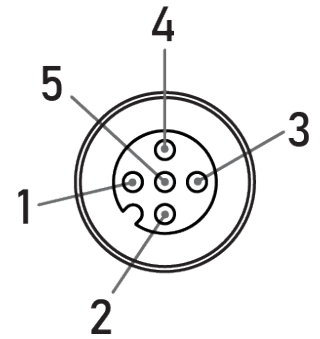
## Electrical Specs

ICS 2 (IC)		
PIN (M12)	FUNCTION	WIRE COLOR
1	24V DC	BROWN
2	0-10V ANALOG CONTROL	WHITE
3	DC GND	BLUE
4	GLO	BLACK
5	N/A	GRAY

ICS 3 (I3 & I3S)		
PIN (M12)	FUNCTION	WIRE COLOR
1	24V DC	BROWN
2	SHIELD	WHITE
3	DC GND	BLUE
4	PNP/ACTIVE HIGH TRIGGER	BLACK
5	0-10V ANALOG CONTROL	GRAY

24 VOLT		
PIN (M12)	FUNCTION	WIRE COLOR
1	24V DC	BROWN
2	N/A	WHITE
3	DC GND	BLUE
4	N/A	BLACK
5	N/A	GRAY

## Optional M12 Pinout



MALE  
5-POSITION

## Control Specs

C1 Connector	C5 Connector	ICS 2 (IC)	ICS 3 (I3)	ICS 3S (I3S)
For use with: DCS Series Controllers	For use with: Pulsar 320 Strobe Controller.	Continuous in-line controller  Powered with: 24V power supply	Combination strobe/continuous in-line controller  Powered with: 24V power supply	Default-OFF strobe/continuous in-line controller  Powered with: 24V power supply

## Warranty Information

Every Advanced illumination, Inc. (Ai) product is thoroughly inspected and tested before leaving the factory. Products are warranted to be free of defects in workmanship and materials for a period of FIVE YEARS from the original date of purchase. Should a defect develop during this period, customers may return the complete product, freight prepaid, to one of Ai's distributors or to the Ai factory. All product warranty returns require a Return Merchandise Authorization (RMA) number which is obtained from Customer Service. The RMA number must be clearly marked on the outside of the package. Ai will inspect the unit, and if a defect is found will, at our option, repair or replace the product without charge. Ai disclaims liability for any implied warranties, including implied warranties of "merchantability" and "fitness for a specific purpose." For products under warranty that have since been discontinued, Ai will make an effort to replace with equivalent parts; for circumstances that do not allow for equivalent replacement, Ai reserves the right to repair or replace these products with an updated version. Ai cannot be held responsible for the unauthorized or inappropriate use of its products. Any unauthorized repair or modifications will result in a voided warranty.

No Liability for Consequential Damages: In no event shall Ai be liable for any consequential, special, incidental, or indirect damages of any kind arising from the sale or use of the products.

## Electromagnetic Compatibility

This product was tested and complies with the regulatory requirements and limits for electromagnetic compatibility (EMC) as stated in the product specifications. These requirements and limits are designed to provide reasonable protection against harmful interference only when the product is operated in its intended industrial electromagnetic environment. To minimize the potential for electromagnetic interference or unacceptable performance degradation, install and use this product in strict accordance with the instructions in the product documentation.

## Customer Service

For information on existing orders, or to make an order adjustment, contact us Monday through Friday 8:00 am to 5:00 pm ET or send an email to [orders@advancedillumination.com](mailto:orders@advancedillumination.com).

## Company Information

### **Advanced Illumination**

440 State Garage Road, Rochester, VT 05767

Phone: 802.767.3830

Fax: 802.767.2636

Email: [info@advancedillumination.com](mailto:info@advancedillumination.com)

Web: [advancedillumination.com](http://advancedillumination.com)

© 2021 Advanced illumination Inc. All rights reserved