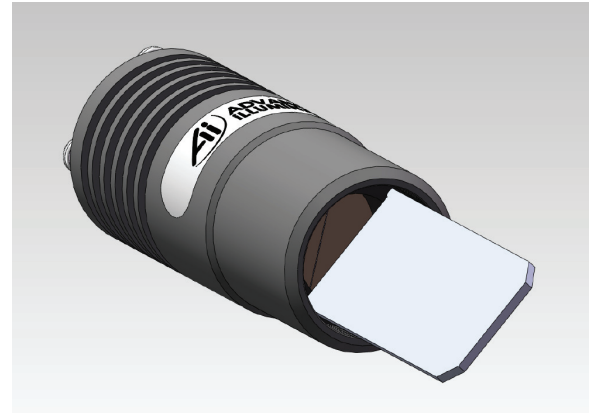


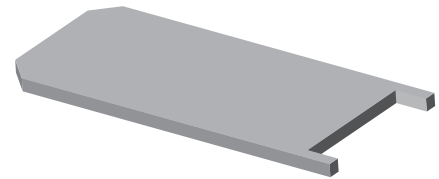
## Pattern Replacement Procedure

(Please read and understand all the following steps before proceeding.)

- Power down the SL191 Pattern Projector Light
- Unscrew the final focusing lens, (if any)
- Locate the two slots on opposing sides of the reticle retainer ring and carefully engage the spanner wrench
- Removing the reticle works best with the projector facing downward
- Turn counterclockwise to loosen; clockwise to tighten (when facing into the projector)
- Place the reticle and retaining ring on the wrench, oriented with the purple chromed side facing into the projector
- Carefully seat the reticle into the projector and turn clockwise to tighten, ensuring that it is flat and flush with the housing
- If threaded properly, the reticle and retainer will screw in smoothly (do not force or it will cross-thread)
- Do not overtighten
- Keep dust and fingerprints off the reticles and also projector diffuser located under the reticle
- Do NOT remove the diffuser unless instructed by Ai to service



SL191 with spanner wrench



Spanner Wrench

(Images for reference only)