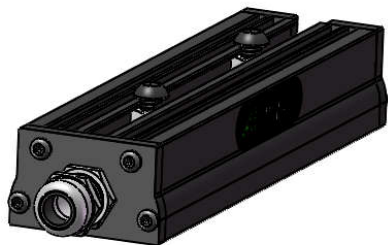
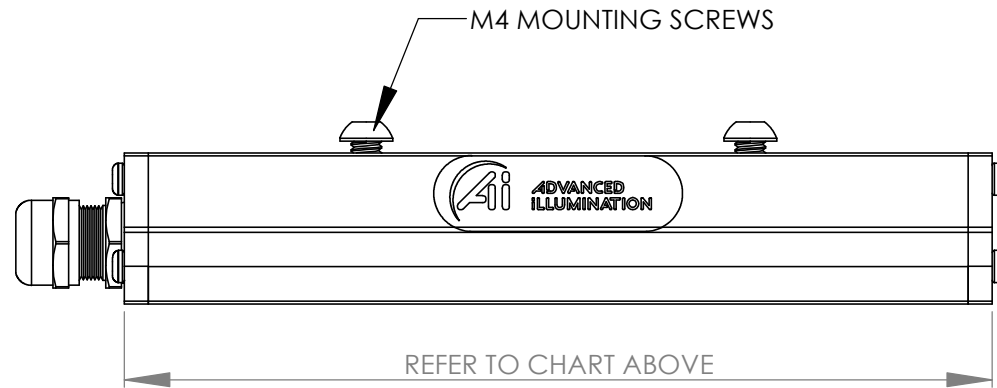
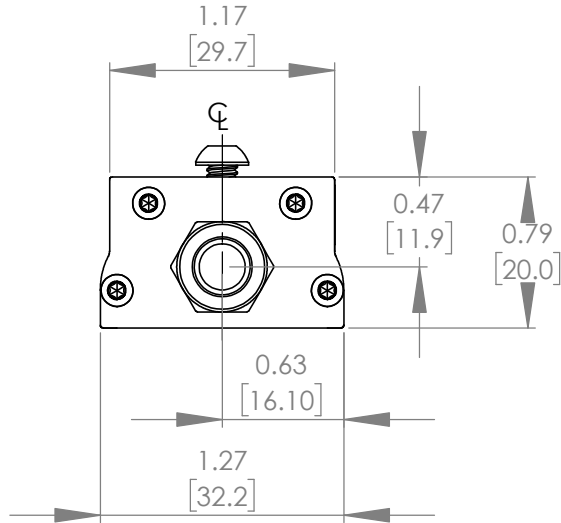
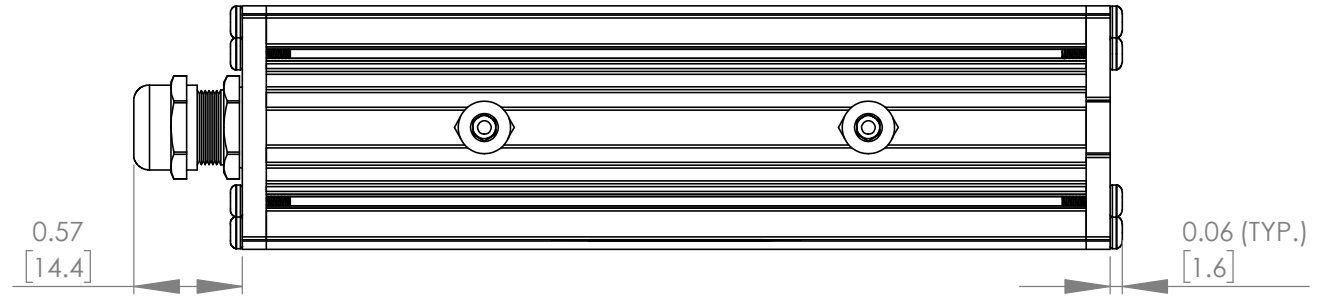


# AL116 LENGTH MATRIX

PART #	LENGTH IN MM (INCHES)
AL11602	64.0 (2.52)
AL11604	114.8 (4.52")
AL11606	165.6 (6.52")
AL11608	216.4 (8.52")
AL11610	267.2 (10.52")
AL11612	318.0 (12.52")
AL11614	368.8 (14.52")
AL11616	419.6 (16.52")
AL11618	470.4 (18.52")
AL11620	521.2 (20.52")

REVISIONS			
REV.	DESCRIPTION	DATE	DCN NO
-	FOR QUOTING PURPOSES ONLY		



FOR REFERENCE ONLY

**PROPRIETARY AND CONFIDENTIAL**  
 THESE DRAWINGS AND SPECIFICATIONS ARE THE EXCLUSIVE PROPERTIES OF ADVANCED ILLUMINATION INCORPORATED ISSUED IN STRICT CONFIDENCE AND SHALL NOT, WITHOUT THE PRIOR WRITTEN PERMISSION OF ADVANCED ILLUMINATION INC BE REPRODUCED, COPIED OR USED FOR ANY PURPOSE WHATSOEVER EXCEPT THE MANUFACTURE OF ARTICLES FOR ADVANCED ILLUMINATION INC

CUT USING: -		<b>UNLESS OTHERWISE SPECIFIED:</b>		DATE	NAME	<b>ADVANCED ILLUMINATION</b> 440 STATE GARAGE ROAD, ROCHESTER, VERMONT 05767
		SURFACE SHOULD BE FREE OF SCRATCHES, BURRS, AND DENTS		09/28/2018	T.MILLS	
		DIMENSIONS ARE IN: INCHES		CHECKED	--	<b>TITLE:</b> DRAWING, INSTALLATION, AL116 (NONSEALED)
		<u>TOLERANCES</u>		APPROVED	--	
		FRACTIONAL ± 1/16		MATERIAL		<b>SIZE</b> DWG. NO. <b>REV</b> <b>A</b> AL116 (NONSEALED) -
		ANGULAR: MACH ± 1 BEND ± 1		FINISH		
		TWO PLACE DECIMAL ± .010				SCALE: NTS/C CODE: - SHEET 1 OF 1
		THREE PLACE DECIMAL ± .005				
NEXT ASSY	USED ON	MAKE FROM				
APPLICATION						