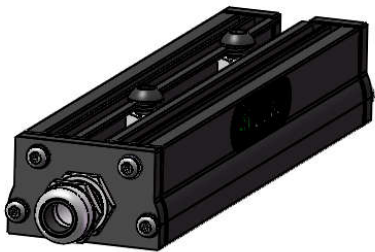
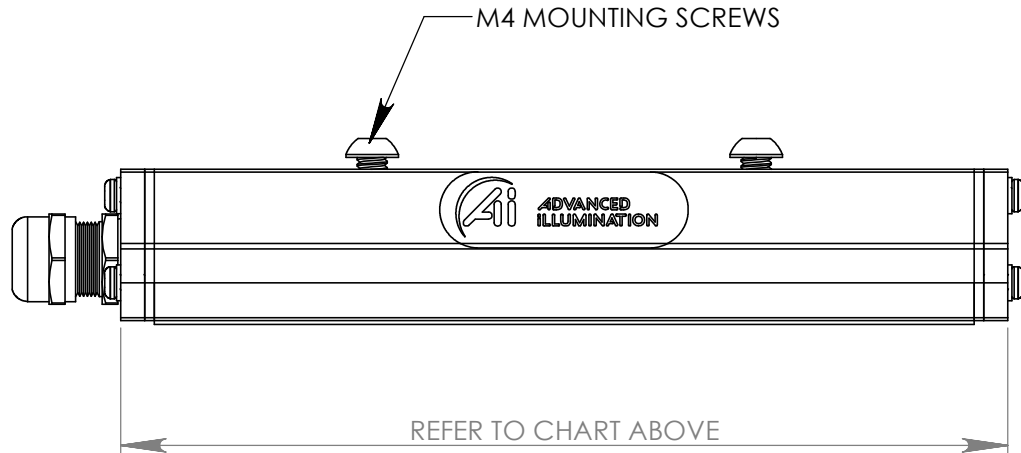
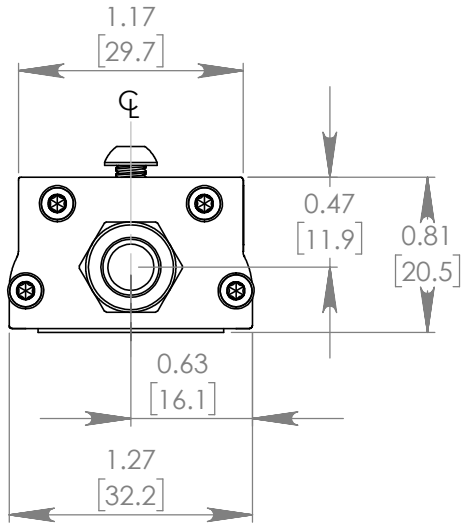
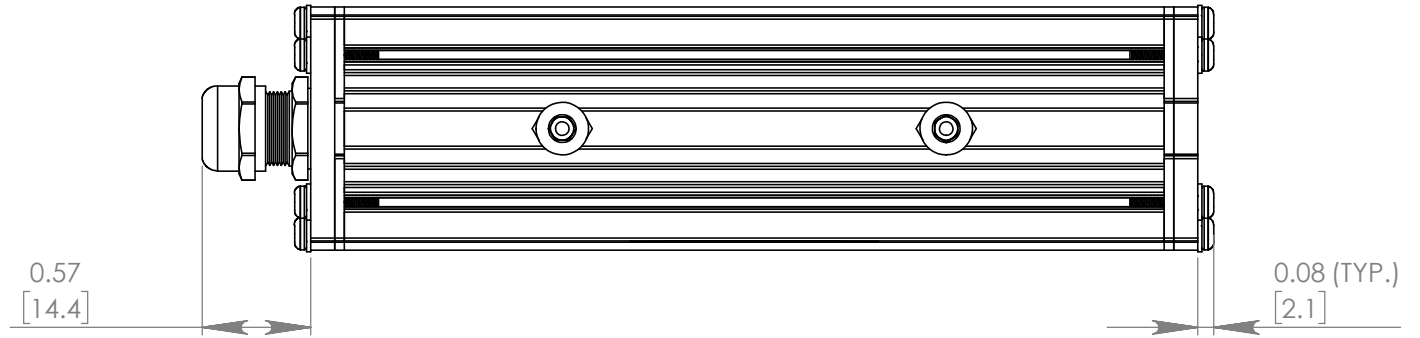


# AL116 LENGTH MATRIX

PART #	LENGTH IN MM (INCHES)
AL11602	66.6 (2.62)
AL11604	117.3 (4.62")
AL11606	168.2 (6.62")
AL11608	219.0 (8.62")
AL11610	269.8 (10.62")
AL11612	320.6 (12.62")
AL11614	371.4 (14.62")
AL11616	422.2 (16.62")
AL11618	473.0 (18.62")
AL11620	523.8 (20.62")

REVISIONS			
REV.	DESCRIPTION	DATE	DCN NO
-	FOR QUOTING PURPOSES ONLY		



FOR REFERENCE ONLY

**PROPRIETARY AND CONFIDENTIAL**  
 THESE DRAWINGS AND SPECIFICATIONS ARE THE EXCLUSIVE PROPERTIES OF ADVANCED ILLUMINATION INCORPORATED ISSUED IN STRICT CONFIDENCE AND SHALL NOT, WITHOUT THE PRIOR WRITTEN PERMISSION OF ADVANCED ILLUMINATION INC BE REPRODUCED, COPIED OR USED FOR ANY PURPOSE WHATSOEVER EXCEPT THE MANUFACTURE OF ARTICLES FOR ADVANCED ILLUMINATION INC

CUT USING: -	UNLESS OTHERWISE SPECIFIED:	DATE	NAME
	SURFACE SHOULD BE FREE OF SCRATCHES, BURRS, AND DENTS	08/20/2018	T.MILLS
	DIMENSIONS ARE IN: INCHES	--	--
	<u>TOLERANCES</u>	--	--
	FRACTIONAL ± 1/16		
	ANGULAR: MACH ± 1 BEND ± 1		
	TWO PLACE DECIMAL ± .010		
	THREE PLACE DECIMAL ± .005		
NEXT ASSY	USED ON	FINISH	
	APPLICATION		

**UNIT WEIGHT:**

**Aii** ADVANCED ILLUMINATION 440 STATE GARAGE ROAD, ROCHESTER, VERMONT 05767

TITLE: DRAWING, INSTALLATION, AL116 (SEALED)

SIZE	DWG. NO.	REV
<b>A</b>	AL116 (SEALED)	-

SCALE: NTS/C CODE: - SHEET 1 OF 1