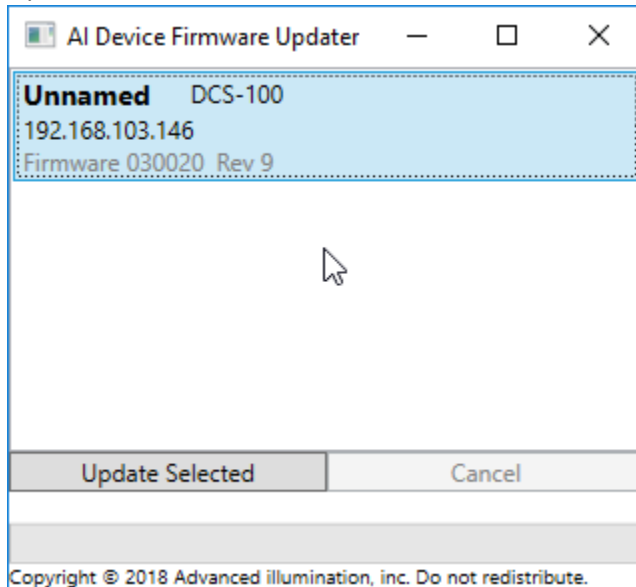


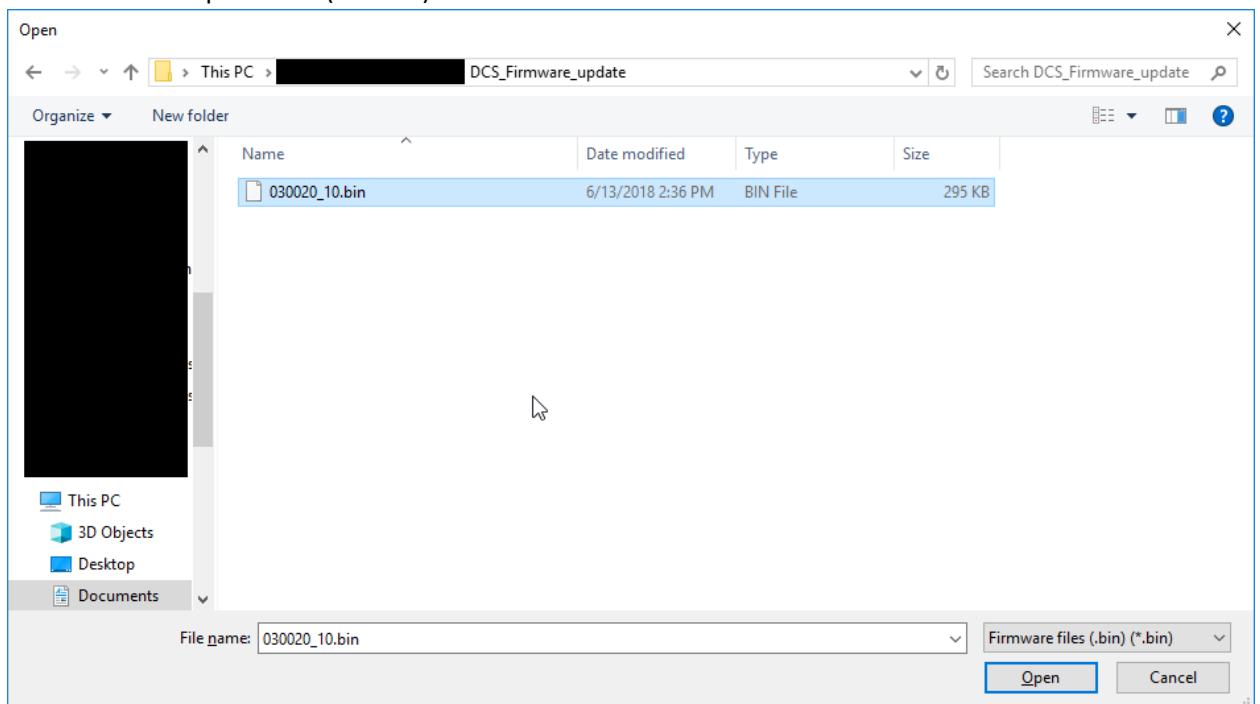
Ai Firmware Update Utility

Usage

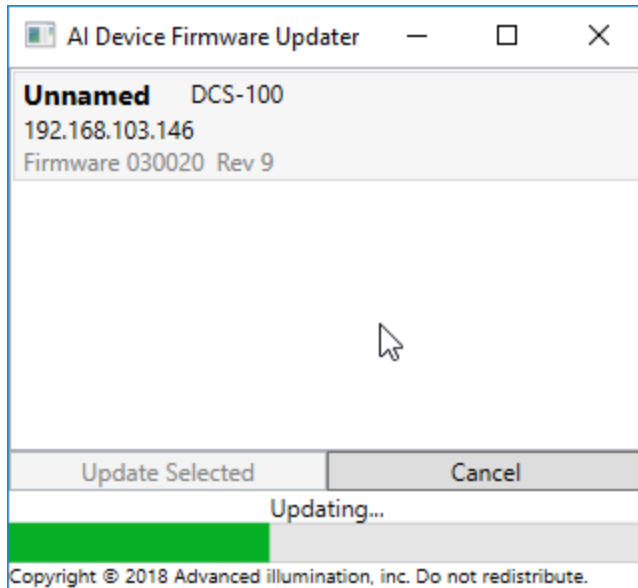
1. Ensure the device is powered on and in the same network as the host PC.
2. Open the software.



3. Either select or double-click the device you want to update
4. Browse for the update file (*.bin)



5. Once the file is selected, the update process begins



Possible issues

If the status message shows "Doing BOOTP..." with an indeterminate progress bar, then allow several minutes for the update to proceed. If after 10 or more minutes it doesn't proceed past the BOOTP stage, then try the procedure from a different PC or with the direct-connection method outlined in the device manual.